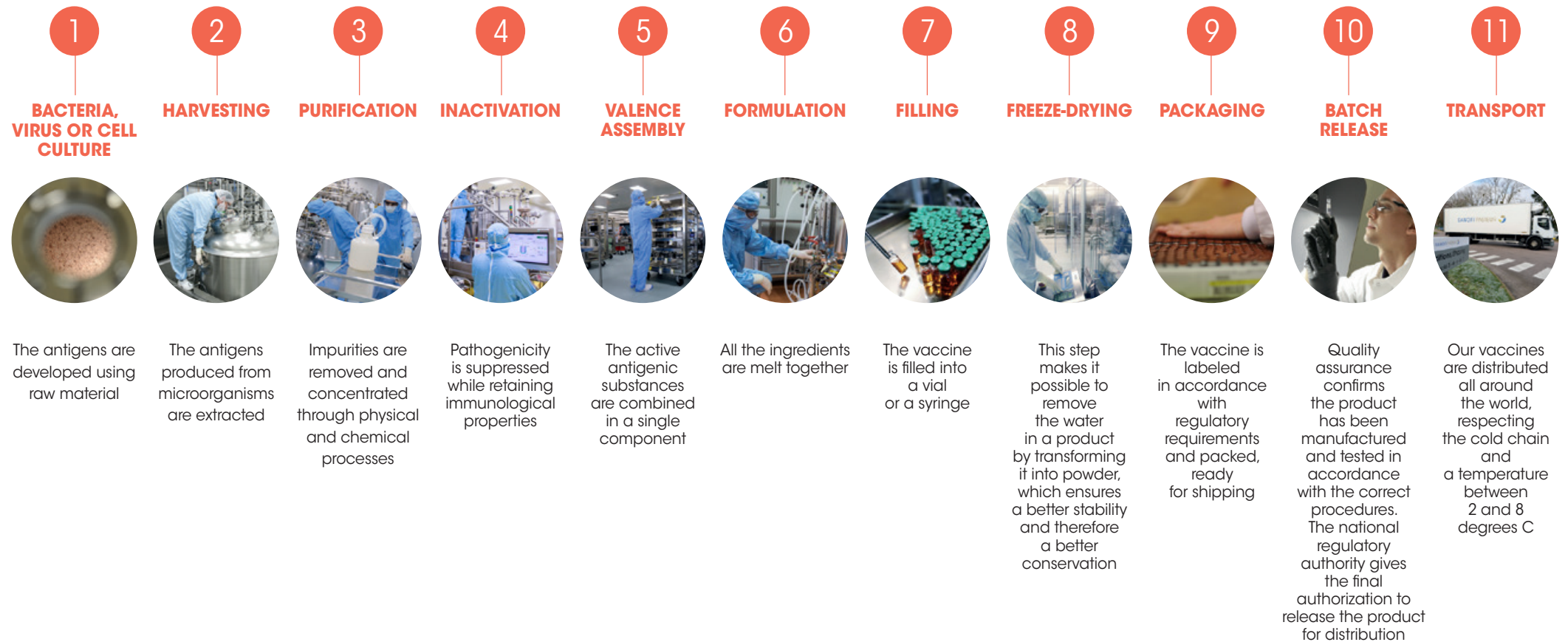


VACCINES: A COMPLEX MANUFACTURING PROCESS



PRODUCTION TAKES BETWEEN
6 AND 36 MONTHS

70% OF THE TIME OF PRODUCTION OF A VACCINE IS DEDICATED TO **QUALITY CONTROL**, WHICH REPRESENTS SEVERAL HUNDREDS OF TESTS